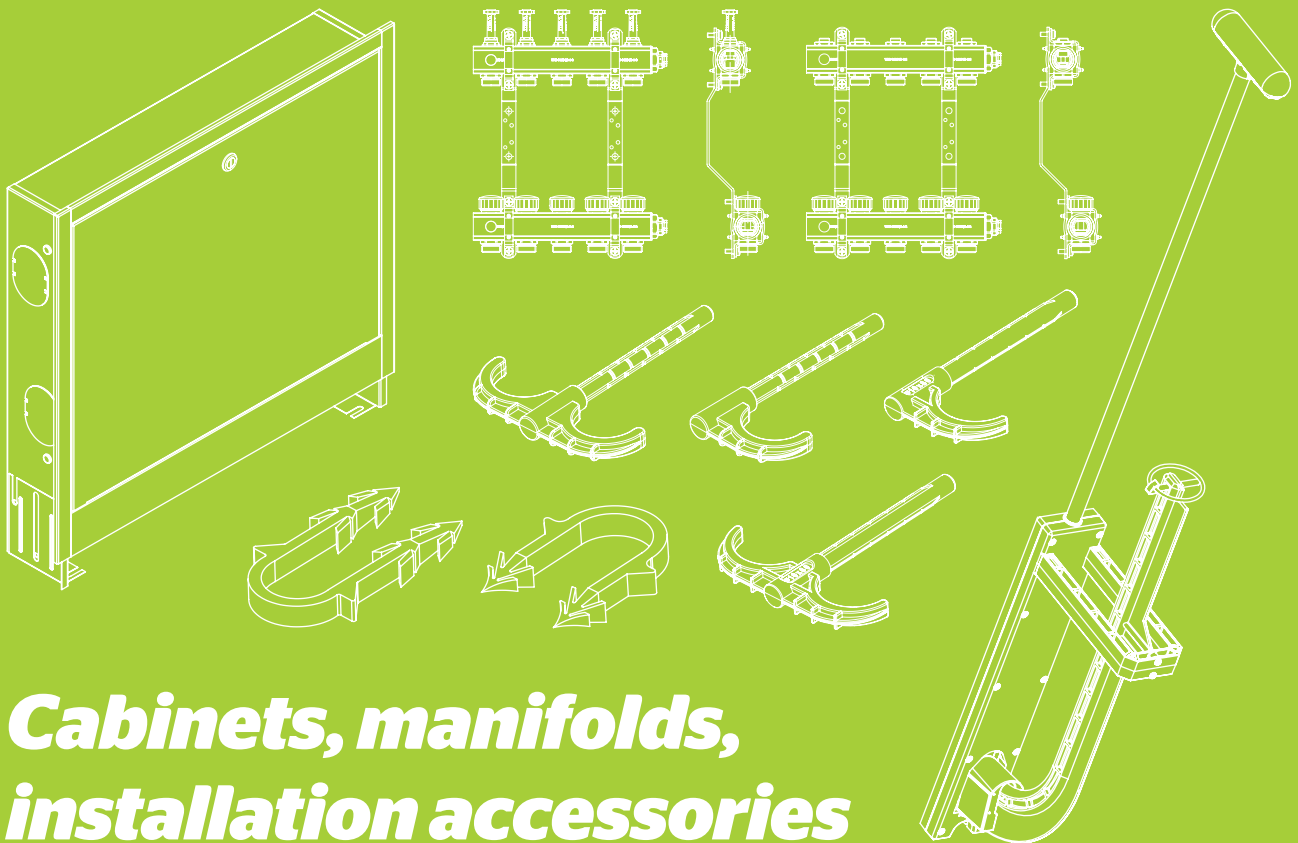


# ECOLINE



***Cabinets, manifolds,  
installation accessories***

***Quality and reliability***

## ECObox - surface-mounted SNE cabinets

Surface-mounted SNE cabinets are designed for surface-mounting of manifolds with accessories in the form of connecting sets, drain valves, vents, etc.

- Cabinets are made of galvanized steel sheet, powder coated in RAL 9016 (white).
- The back wall is equipped with 2 installation holes Ø6 mm and 2 mounting rails on which it is possible to adjust the spacing of mounting of manifolds.
- Each of the rails is equipped with 2 square screws M6x18 with washers and nuts.
- Cabinet doors are equipped with coin / screwdriver locks.
- The removable bottom masking frame allows for easy installation of the manifold inside the cabinet.

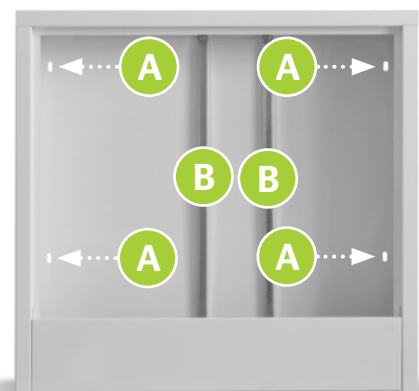


**1** Surface-mounted SNE cabinet

Cabinet type	External dimensions [mm]			Door dimensions [mm]		Estimated manifold size
	width	height	depth	width	height	Number of circuits
SNE-0	385	580	110	332	454	4
SNE-1	485	580	110	432	454	6
SNE-2	615	580	110	562	454	9
SNE-3	760	580	110	707	454	12
SNE-4	845	580	110	792	454	14
SNE-5	1015	580	110	958	454	16
SNE-6	1150	580	110	1093	454	18

### Installation of SNE cabinets

- The place of installation of the cabinet should be provided, taking into account the pipeline route and the total height of the floor.
- The cabinet should be mounted at the correct height taking into account the thickness of the horizontal thermal insulation, jointless floor and floor covering, so that the level of the floor faced with the lower edge of the cabinet.
- The cabinet must be levelled and secured to the vertical construction partition through the mounting holes in the rear of the cabinet.
- For mounting of the cabinet, use the appropriate fasteners depending on wall construction.
- The complete manifold should be mounted in the cabinet on existing mounting screws.
- Spacing of mountings adjust by sliding of screws in rails.

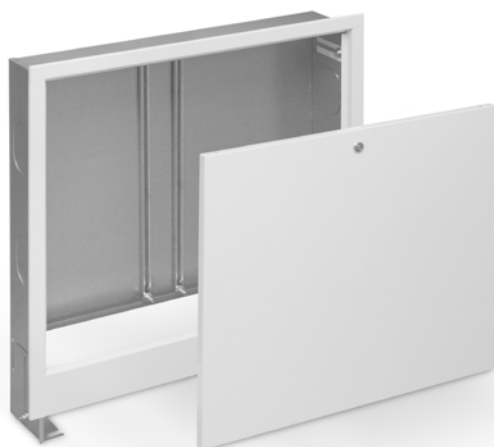


**A** Mounting holes      **B** Mounting rails

## ECObOX - flush-mounted SPE cabinets

Flush-mounted SPE cabinets are designed for flush-mounting of manifolds with accessories in the form of connecting sets, drain valves, vents, etc.

- Cabinets are made of galvanized steel sheet, powder coated front in RAL 9016 (white).
- The back wall is equipped with 2 mounting rails on which it is possible to adjust the spacing of mounting of manifolds.
- Each of the rails is equipped with 2 square screws M6x18 with washers and nuts.
- Cabinet doors are equipped with coin / screwdriver locks.
- Side walls with oval openings with lids 62 x 87 mm for feeding the manifold from the side.
- Extendable lower feet make possible height adjustment of mounting of the cabinet above the ground (+/- 90 mm).
- The adjustable front frame provides the depth adjustment of the cabinet development (+/- 60 mm).

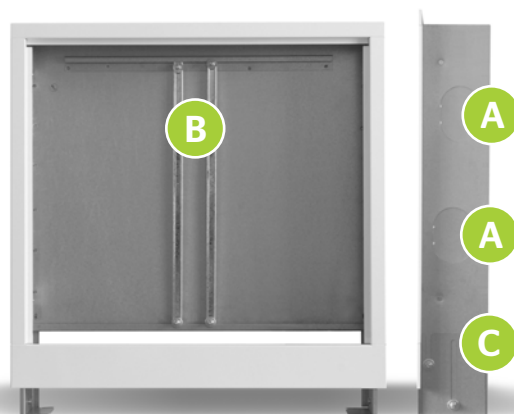


**2** Flush-mounted SPE cabinet

Cabinet type	External dimensions [mm]			Door dimensions [mm]		Estimated manifold size
	width	height	depth	width	height	Number of circuits
SPE-0	335	575-665	110-170	328	454	4
SPE-1	435	575-665	110-170	428	454	6
SPE-2	565	575-665	110-170	558	454	8
SPE-3	715	575-665	110-170	708	454	11
SPE-4	795	575-665	110-170	788	454	13
SPE-5	965	575-665	110-170	953	454	15
SPE-6	1140	575-665	110-170	1128	454	17

### Installation of SPE cabinets

- The place of installation of the cabinet should be provided, taking into account the pipeline route and the total height of the floor.
- The cabinet should be mounted at the correct height taking into account the thickness of the horizontal thermal insulation, jointless floor and floor covering. Cabinet feet should be adjusted to such the defined height.
- The cabinet must be inserted in the niche and secured to the vertical construction partition.
- For mounting of the cabinet, use the appropriate fasteners depending on wall construction.
- In the case of side feed of the manifold, remove lids covering side openings.
- In order to protect the cabinet face from damage during painting and decorating works, it is possible to disassemble the frame with the door.
- The complete manifold should be mounted in the cabinet on existing mounting screws.
- Spacing of mountings adjust by sliding of screws in rails.



**A** Ejected foot    **B** Mounting rails    **C** Side openings

## ECObOX - surface-mounted SNE OP cabinets

**Flush-mounted SNEOP cabinets are intended for manifolds with accessories in the form of connecting sets, drain valves, vents, mixing systems, etc. with the possibility of connecting the automation control.**

- Cabinets are made of galvanized steel sheet, powder coated front in RAL 9016 (white).
- The back wall is equipped with 4 installation holes 0.8 mm and 2 mounting rails on which it is possible to adjust the spacing of mounting of manifolds.
- Each of the rails is equipped with 4 square screws M6x18 with washers and nuts.
- The back wall is equipped with a hook for automation control with a height of 80 mm.
- Cabinet doors are equipped with coin / screwdriver locks.
- The removable bottom masking allows for easy installation of the manifold inside the cabinet.

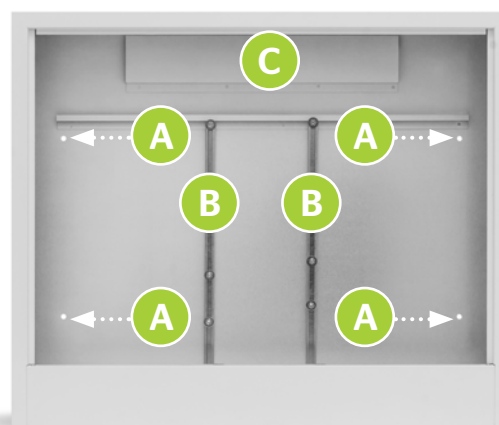


**3** Flush-mounted SNE OP cabinet

Cabinet type	External dimensions [mm]			Door dimensions [mm]		Estimated manifold size
	width	height	depth	width	height	Number of circuits
SNE OP-1	580	660	140	524	532	10
SNE OP-2	780	660	140	724	532	13
SNE OP-3	930	660	140	874	532	15

### Installation of SNE OP cabinets

- The place of installation of the cabinet should be provided, taking into account the pipeline route and the total height of the floor.
- The cabinet should be mounted at the correct height taking into account the thickness of the horizontal thermal insulation, jointless floor and floor covering, so that the level of the floor faced with the lower edge of the cabinet.
- The cabinet must be levelled and secured to the vertical construction partition through the holes in the rear of the cabinet.
- For mounting of the cabinet, use the appropriate fasteners depending on wall construction.
- The complete manifold should be mounted in the cabinet on existing mounting screws.
- Spacing of mountings adjust by sliding of screws in rails.



**A** Mounting holes

**B** Mounting rails

**C** Hook for automation control

## ECObbox - flush-mounted SPE OP cabinets

**Flush-mounted SPE OP cabinets are intended for manifolds with accessories in the form of connecting sets, drain valves, vents, mixing systems, etc. with the possibility of connecting the automation control.**

- Cabinets are made of galvanized steel sheet, powder coated front in RAL 9016 (white).
- The back wall is equipped with 2 mounting rails on which it is possible to adjust the spacing of mounting of manifolds.
- Each of the rails is equipped with 4 square screws M6x18 with washers and nuts.
- The back wall is equipped with a hook for automation control with a height of 80 mm.
- Cabinet doors are equipped with coin / screwdriver lock.
- The side walls are equipped with the rectangular openings 80x89mm spacing of 220mm allows for feeding the manifold from the side.
- The adjustable front frame makes possible adjusting of the depth of the cabinet development.

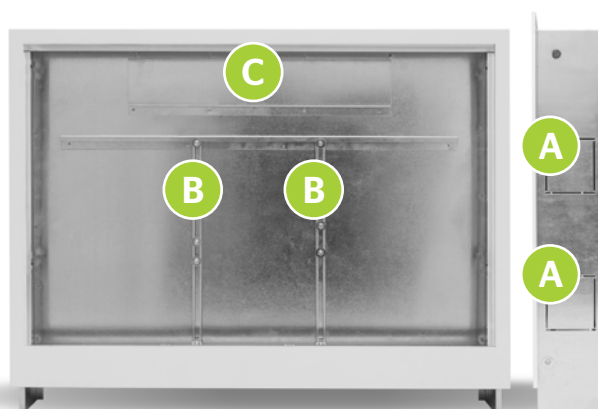


**4** Flush-mounted SPE OP cabinet

Cabinet type	External dimensions [mm]			Door dimensions [mm]		Estimated manifold size
	width	height	depth	width	height	Number of circuits
SPE OP-1	580	620	110-165	568	496	10
SPE OP-2	780	620	110-165	768	496	13
SPE OP-3	930	620	110-165	918	496	15

### Installation of SPE OP cabinets

- The place of installation of the cabinet should be provided, taking into account the pipeline route and the total height of the floor.
- The cabinet should be mounted at the correct height taking into account the thickness of the horizontal thermal insulation, jointless floor and floor covering.
- The cabinet must be inserted in the niche, levelled and secured to the vertical construction partition.
- For mounting of the cabinet, use the appropriate fasteners depending on wall construction.
- In the case of side feed of the manifold, remove lids covering side openings.
- In order to protect the cabinet face from damage during painting and decorating works, it is possible to disassemble the frame with the door.
- The complete manifold should be mounted in the cabinet on existing mounting screws.
- Spacing of mountings adjust by sliding of screws in rails.



**A** Side openings

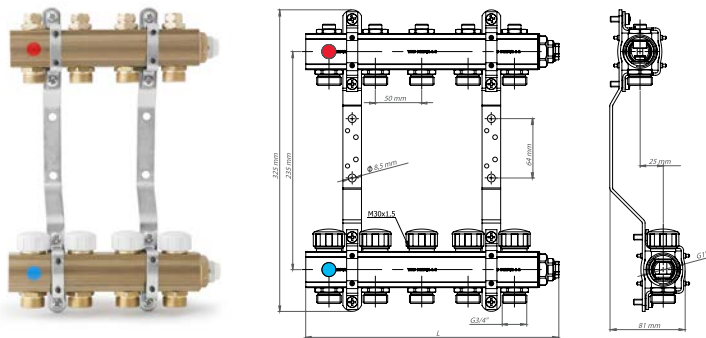
**B** Mounting rails

**C** Hook for automation control

## Manifolds ECOLine

### The brass manifold on the 1" profile for underfloor heating with valves for actuators

- 1" profile brass beams (brass in accordance with DIN EN 1254).
- Outputs for individual heating circuits with male G3/4" thread.
- Cooperation with pipe unions EUROKONUS.
- Outputs for individual circuits with spacing of 50 mm.
- Lower beam equipped with thermostatic shut off valves for actuators.
- Cooperation with the electric actuators through the thread M30x1,5.
- Upper beam equipped with valves with pre-set.
- G1" female thread inlet.
- Manual vent.
- Brackets with holes for mounting in cabinets.
- Special rubber damping system, mounted in holders of the manifold, prevents noise generation associated with the operation of the entire system.

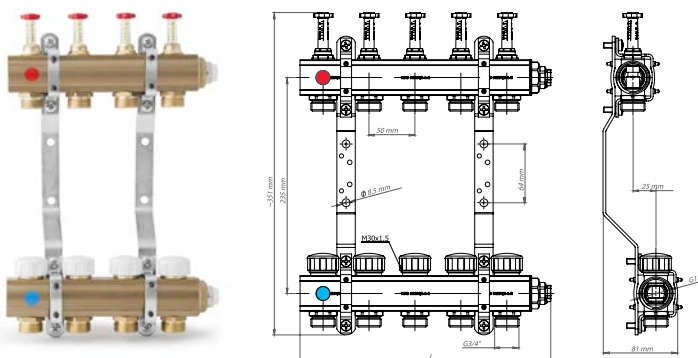


Manifold

A

### The brass manifold on the 1" profile for underfloor heating with valves for actuators and flowmeters

- 1" profile brass beams (brass in accordance with DIN EN 1254).
- Outputs for individual heating circuits with male G3/4" thread.
- Cooperation with pipe unions EUROKONUS.
- Outputs for individual circuits with spacing of 50 mm.
- Lower beam equipped with thermostatic shut off valves for actuators.
- Cooperation with the electric actuators through the thread M30x1,5.
- The upper beam is equipped with a flowmeters with pre-set (ability to work in glycol installations).
- G1" female thread inlet.
- Manual vent.
- Brackets with holes for mounting in cabinets.
- Special rubber damping system, mounted in holders of the manifold, prevents noise generation associated with the operation of the entire system.



Manifold

B

No.	2	3	4	5	6	7	8	9	10	11	12
L[mm]	148	198	248	298	348	398	448	498	548	598	648
Manifold A	E7102A	E7103A	E7104A	E7105A	E7106A	E7107A	E7108A	E7109A	E7110A	E7111A	E7112A
Manifold B	E7502A	E7503A	E7504A	E7505A	E7506A	E7507A	E7508A	E7509A	E7510A	E7511A	E7512A

## Plastic tacker for pipe fasteners

1

Comfortable work thanks to optimal height of the device.

2

A light, durable plastic construction.

3

Device tested in practice.

4

The universal design allows for mounting of short and long fasteners.

5

The improved guide and a special ballasting element guarantee adequate input of the fastener into the slot of the device. Thus the tacker does not jam during operation and provides a quick and safe installation.

6

With place for Your logo.



Plastic tacker for fasteners

Use	Code	Packing
Pipe Ø 14-18	E-100120	1 pcs.

## Fasteners for pipe mounting

Long Tacker clips = 55 mm for mounting of pipes on styrofoam mats

Use	Code	Packing
Pipe Ø 14-18	E-100108	100 pcs. in bulk
Pipe Ø 14-18	E-100110	200 pcs. in bulk
Pipe Ø 14-18	E-100112	20x25 pcs. in cartridges



Short Tacker clips L=41 mm for mounting of pipes on styrofoam mats

Use	Code	Packing
Pipe Ø 14-18	E-100114	20x25 pcs. in cartridges
Pipe Ø 14-18	E-100116	100 pcs. in bulk
Pipe Ø 14-18	E-100118	200 pcs. in bulk

## Plastic hooks pipe mounting

Double plastic hook for pipes

Use	Dimension	Code	Packing	Color
Pipe Ø 12-26 or pipes Ø 12-20 in corrugated hose	L=80 mm, Ø 8 mm	E-100102	100 pcs.	black
Pipe Ø 12-26 or pipes Ø 12-18 in corrugated hose	L=80 mm, Ø 10 mm	E-100100	100 pcs.	white



Single plastic hook for pipes

Use	Dimension	Code	Packing	Color
Pipe Ø 12-26 or pipes Ø 12-20 in corrugated hose	L=80 mm, Ø 8 mm	E-100106	100 pcs.	black
Pipe Ø 12-26 or pipes Ø 12-18 in corrugated hose	L=80 mm, Ø 10 mm	E-100104	100 pcs.	white



# **ECOLINE**

***KAN Sp. z o.o.***

ul. Zdrojowa 51

16-001 Białystok-Kleosin

tel. 85 74 99 200

fax 85 74 99 201

e-mail: [kan@kan-therm.com](mailto:kan@kan-therm.com)

***[www.kan-therm.com](http://www.kan-therm.com)***